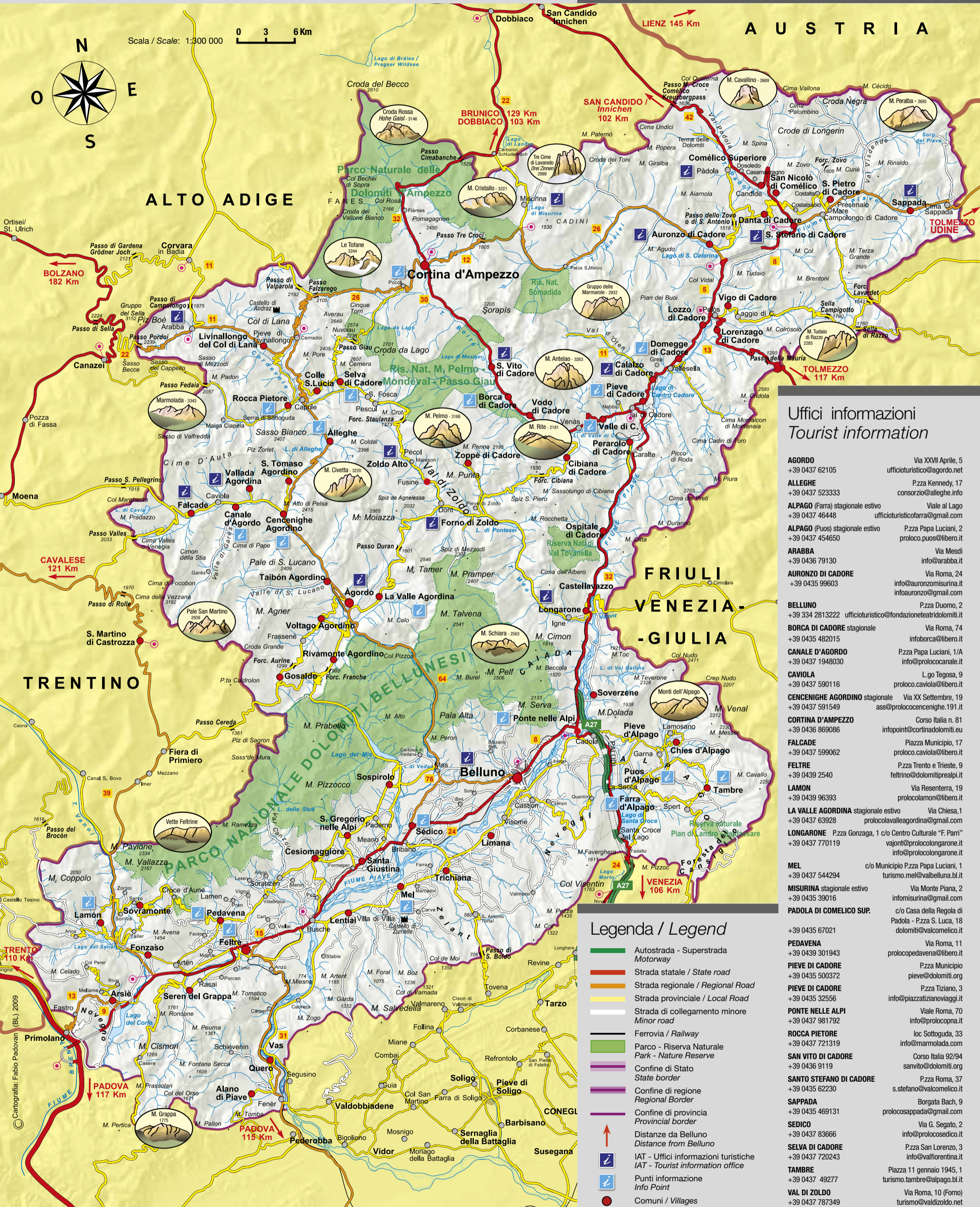


La provincia di Belluno

Dolomiti patrimonio dell'Umanità Unesco
The Dolomites, A World Heritage Site



Provincia di **belluno**



Uffici informazioni Tourist information

AGORDO +39 0437 62105	Via XXVII Aprile, 5 ufficioturistico@agordo.net
ALLEGHE +39 0437 523333	P.zza Kennedy, 17 consorzio@alleghe.info
ALPAGO (Farra) stagionale estivo +39 0437 46448	Viale al Lago ufficioturistico@farra.com
ALPAGO (Puos) stagionale estivo +39 0437 454650	P.zza Papa Luciani, 2 proloco.puos@libero.it
ARABBA +39 0436 79130	Via Mesdi info@arabba.it
AURONZO DI CADORE +39 0435 99603	Via Roma, 24 info@auronzomurina.it infoauronzo@gmail.com
BELLUNO +39 334 2813222	P.zza Duomo, 2 ufficioturistico@fondazioneatridolomiti.it
BORCA DI CADORE stagionale +39 0435 482015	Via Roma, 74 infoborca@libero.it
CANALE D'AGORDO +39 0437 1948030	P.zza Papa Luciani, 1/A info@proloccanale.it
CAVIOLA +39 0437 590116	L.g. Tegosa, 9 proloco.caviola@libero.it
CENCENIGHE AGORDINO stagionale +39 0437 591549	Via XX Settembre, 19 ass@proloccencenighe.191.it
CORTINA D'AMPEZZO +39 0436 869086	Corso Italia n. 81 infopoint@cortinadolomiti.eu
FALCADE +39 0437 599062	Piazza Municipio, 17 proloco.caviola@libero.it
FELTRE +39 0439 2540	P.zza Trento e Trieste, 9 feltrino@dolomiti@rai.it
LAMON +39 0439 96393	Via Resentera, 19 prolocolamon@libero.it
LA VALLE AGORDINA stagionale estivo +39 0437 63928	Via Chiesa, 1 prolocolavalleagordina@gmail.com
LONGARONE +39 0437 770119	P.zza Gonzaga, 1 c/o Centro Culturale "E. Pardi" vajont@proloclongarone.it info@proloclongarone.it
MEL +39 0437 544294	c/o Municipio P.zza Papa Luciani, 1 turismo.mel@valbelluna.bl.it
MISURINA stagionale estivo +39 0435 39016	Via Monte Piana, 2 informisurina@gmail.com
PADOLA DI COMELICO SUP. +39 0435 67021	c/o Casa della Regola di Padola - P.zza S. Luca, 18 dolomiti@valcomelico.it
PEDAVENA +39 0439 301943	Via Roma, 11 proloccopedavena@libero.it
PIEVE DI CADORE +39 0435 500372	P.zza Municipio pieve@dolomiti.org
PIEVE DI CADORE +39 0435 32556	P.zza Tiziano, 3 info@piazatizianoviaggi.it
PONTE NELLE ALPI +39 0437 981792	Viale Roma, 70 info@proloccopna.it
ROCCA PIETRE +39 0437 721319	loc Sottoguda, 33 info@marmolada.com
SAN VITO DI CADORE +39 0436 9119	Corso Italia 92/94 sanvito@dolomiti.org
SANTO STEFANO DI CADORE +39 0435 62230	P.zza Roma, 37 s.stefano@valcomelico.it
SAPPADA +39 0435 469131	Borgata Bach, 9 prolocosappada@gmail.com
SEDICO +39 0437 83666	Via G. Segato, 2 info@prolocosedico.it
SELVA DI CADORE +39 0437 720243	P.zza San Lorenzo, 3 info@valfiorentina.it
TAMBRE +39 0437 49277	Piazza 11 gennaio 1945, 1 turismo.tambre@alpago.bl.it
VAL DI ZOLDO +39 0437 787349	Via Roma, 10 (Forno) turismo@valdizoldo.net
VAL DI ZOLDO +39 0437 789145	Viale Dolomiti, 4 (Mareson) turismo@valdizoldo.net
VALLE DI CADORE +39 0435 501527	Via XX Settembre 79/A info@valledicadoredolomiti.it

Legenda / Legend

- Autostrada - Superstrada
- Motorway
- Strada statale / State road
- Strada regionale / Regional Road
- Strada provinciale / Local Road
- Strada di collegamento minore
- Minor road
- Ferrovia / Railway
- Parco - Riserva Naturale
- Park - Nature Reserve
- Confine di Stato
- State border
- Confine di regione
- Regional Border
- Confine di provincia
- Provincial border
- Distanze da Belluno
- Distance from Belluno
- IAT - Uffici informazioni turistiche
- IAT - Tourist information office
- Punti informazione
- Info Point
- Comuni / Villages

Legenda: stagionale estivo aperto da giugno a settembre - open from June to September
gli infopoint hanno aperture differenziate durante tutto l'anno - infopoint have different openings during all year.





From Belluno to Feltre, following the River Piave

ITINERARY 1

The itinerary starts with a visit to the historical centre of **Belluno**: **Piazza Santo Stefano** and the XV century church of the same name, near the Civic Museum in **Fulcis Palace**, **Porta Dojona** the main entrance to the old renaissance city, **Piazza del Mercato** with the Monte di Pietà and its fifteenth century buildings, **Piazza Duomo** where the cathedral dedicated to S. Martino reigns and the magnificent bell created by Juvarra, Palazzo Piloni and its room of fresco paintings, Palazzo dei Rettori, and the **Porta Rugo**, to shut the south entrance to the city.

Following the national road no. 50 towards Feltre, the first stop on the route is at **Sedico** to admire the **Madonna col Bambino (Mary and child)** by Francesco and Tiziano Vecellio, in the S. M. Annunziata church, and the old houses: Zuppani at Pasa, Rudio at Landris and de' Manzoni at Patt which houses the 7th Alpine Regiment Museum.

Get back on to the national road and at Santa Giustina turn right to reach **Cesiomaggiore**, seat of the Bicycle Museum, of the Ethnographic Museum of the Province of Belluno and an information point of the Dolomiti Bellunesi National Park.

Now continue towards **Feltre** to visit the historical centre, along **Via Mezzaterra**, across the **porta Imperiale** and **Oria**, as far as **Piazza Maggiore**. Here rises the Palazzo della Ragione, which houses the Sena Theatre, the Palazzo Pretorio with the Room of the Crests and the Alboino Castle. In Via Luzzo you will find the **Palazzo Villabruna**, home to the **Civic Museum**. If you descend down the via Paradiso, we recommend a visit to the "**Carlo Rizzarda**" **Modern Art Gallery** and the new **Diocesano Museum of Religious Art**. Outside the walls, beneath the Cathedral there is the **Roman archaeological site**.

A few kilometres from the centre of the city, you cannot miss a visit to the **Santuario dei SS Vittore e Corona** (XI – XII century), in a roman style, with byzantine artistic influences.

From Feltre, there are possible itineraries towards Pedavena and Monte Avena, Arsié and Corlo Lake, Grappa and again towards Belluno, this time on the left of the river Piave, in the direction of Lentiai-Mel.

At **Lentiai** Santa Maria Assunta Church there is a set of works from the school of Tiziano and a beautiful ceiling designed by Cesare Vecellio. In the surroundings of Villa di Villa, near the village of Mel we recommend a detour to visit the **Castello di Zumelle**. In the historical centre of **Mel**, **Orange Flag of T.C.I.**, situated on top of a hill, you can find a magnificent square, the parish church and neighbouring Addolorata Church which has works of Giovanni Da Mel, Andrea Schiavone and Pietro Marescalchi.

From Mel, in the direction of Belluno, the following places are worth a stop: **Trichiana**, with the Villa Piloni-Foscolo and the works of art by Paris Bordon and Giovanni da Mel in the Paldier Church and the Parish Church, and **Limana**, reachable half way up a hill by crossing the Valmorel, where you can visit the old Parish church with the remains of Saint Valentine.

Returning towards Belluno, it is possible to go up to the **Alpe del Nevegal** on the right, and a little further on, past the turn off onto the A27 Motorway, the Santa Croce Lake, the Cansiglio Forest and the splendid **Alpago** mountains.



Belluno
© La Fotografica di Dino Tommasella



Feltre, piazza Maggiore
© Marco Zucco



Pieve di Cadore, Casa del Tiziano



Misurina lake
Foto D.G. Bandion © bandion.it

The itinerary starts from **Pieve di Cadore**, the main historical centre of the whole valley. Inside the central Piazza Tiziano the following is worth a visit: S. Maria Nascente church (**Madonna con Bambino e santi** by Tiziano and Bottega and other works by Francesco and Cesare Vecellio), the seat of the "magnifica comunità di cadore", a fourteenth century building which houses the civic archaeological museum, and finally the birthplace of the painter Tiziano.

Continue until you reach **Calalzo di Cadore**, a major touristic centre which descends down towards the Centro Cadore lake. S. Biagio church and the interesting Lagole archaeological site worth a visit too. A pleasant walk brings you to the villa of Grea and Rizzios, rare examples of ancient architecture.

The following stage is **Vigo di Cadore**, with a visit to the splendid S. Orsola church, then **Lorenzago**, place of Pope John Paul II and Benedict XVI's country retreat.

Continuing in the direction of **Auronzo di Cadore** you will arrive in the centre of the municipal area of the Tre Cime di Lavaredo, which spreads out over 8 kilometres along the banks of S. Caterina Lake, an important location for sport competitions. The S. Caterina Church at Cella is worth a visit, a small but beautiful fifteenth-century building. In **Santo Stefano di Cadore** you can visit the parish church, the oldest in the Val Comelico, documented since 1200. Towards the west you can reach the small village of **San Pietro di Cadore**, and the Poli del Pol building, a marvellous example of a Venetia villa in the mountains.

Continuing now towards the north a small detour will lead you to **San Nicolò Comelico**, where you can visit the church by the same name with fourteenth century frescoes by Gianfrancesco da Tolmezzo.

We thus reach the **Comelico Superiore** with the famous barns of Dosoledo and the Comelico museum of Alpine ladin culture in Padola.

Your itinerary finishes at **Sappada**, **Orange Flag of T.C.I.**: a German-speaking area, which has been able to conserve its landscape and ancient traditions (most notably the Carnival) and it can accommodate even the most demanding tourist, starting from the youngest. The small stream which starts on the slopes of Monte Peralba, at Cima Sappada, will become the Piave, the river which runs through the whole territory of Belluno, continuing down until it reaches Venice.



DOLOMITI
DOLOMITEN
DOLOMITES
DOLOMITIS

CON IL PATROCINIO DELLA FONDAZIONE

The Dolomites entered UNESCO's natural heritage of Humanity

On 26th June 2009, the Dolomites entered UNESCO's natural heritage of humanity, an extraordinary recognition that awards and protects the peerless characteristics of a unique region in the world.

In the province of Belluno, there is the greatest number of Dolomites peaks, according to UNESCO's Natural Heritage of Humanity, with legendary peaks such as Marmolada, Tofane, Antelao, Pelmo, Civetta, Pale di San Lucano, Schiara and Tre Cime di Lavaredo.



Dolomiti
foto D. G. Bandion © bandion.it

Going up from Feltre or Belluno, the first stop is the mining site of Valle Imperina, a few kilometres before **Agordo**. In the main square you will find the Villa Crotta de' Manzoni (which houses the Luxottica sunglasses Museum) facing the Arcidiaconale Church, painted with frescoes by the local painter Giovanni De Min, with the architectural particularity of two bells side by side.

Continue towards Cencenighe, there is an interesting church with a Flügelaltar, and then turning towards the left, you will enter into the Biois Valley.

A worthwhile visit: the home town of Pope John-Paul I, **Canale d'Agordo**, the San Simon church in **Vallada Agordina** with frescos painted by Paris Bordon, and Falcade where you can visit the Augusto Murer studio-museum. Once you get back to Cencenighe you'll follow towards **Alleghe** for an unmissable stroll around the lake and a visit to the parish church (paintings by Valentino Rovisi, a student of Tiepolo).

Swerving to the Val Fiorentina, at **Selva di Cadore** and **Colle Santa Lucia**, you can admire the Santa Fosca, San Lorenzo and Santa Lucia Church. You go down towards **Caprile** and then to the right in the direction of **Rocca Pietore**, with a splendid parish church dedicated to S. Maria Maddalena with a Flügelaltar by Ruprecht Pötsch, and then go up towards Malga Ciapela: here is the funicular to go up to the **Marmolada**, at 3,343 metres it is the highest peak in the Dolomites.

On the road back, choose the route, on foot, across the spectacular gorge of the **Serrai di Sottoguda**, a natural reserve of rare beauty.

And then **Pieve di Livinallongo**, with its Ladine Museum; a little further on there is **Arabba**, at the foot of the imposing Sella mountain range, then, and in the direction of Cortina, take a detour to the **fortress of Andraz**, an old fortified castle dating back to the XI Century. Keep going on and you will reach the viewpoint of **Passo Falzarego** where you will reach at the end the bright valley of Ampezzo.



Colle Santa Lucia
© Moreno Kerer



© Museum of the Great War 3000



Cortina d'Ampezzo
foto D. G. Bandion © bandion.it

Cortina d'Ampezzo is the queen of the Dolomites. This is thanks to its geographical position in a splendid valley with Tofane and Cristallo to the north, Sorapiss and Antelao to the south-east and Croda da Lago to the south-west. Situated in the heart of the Dolomites, the Ampezzo basin is unique for its history, a home point for climbers and skiers and international scene of the high-life but also a place where you can discover people and culture. It is a city which offers you at the same time the bright lights of the shops but also the authentic possibility to discover the Ladine culture.

Not to be missed is a visit to the seventeenth century San Filippo and Giacomo Church, and its bell tower, and the "Ciasa de ra Regoles", home to the "Mario Rimoldi" Modern Art Museum. Also of importance is the "Rinaldo Zardini"

Paleontological Museum and the Ethnographic Museum "Regole d'Ampezzo" in the Alexander Girardi Hall, also home to congresses. From the centre of Cortina towards the north-east, going through the Passo Tre Croci, it is possible to reach the **Misurina Lake** and **Tre Cime di Lavaredo** and **Auronzo di Cadore** (see itinerary 2).

From Cortina, heading towards the west, go up until Passo Falzarego, then cross the sites of the Second World War in the Dolomites. Continuing along you will enter into Agordino (see itinerary 3).

Via the Giau Pass, south-east of Cortina, you can reach **Selva di Cadore**, home to the Museum dedicated to the Mondeval man, one of the most important prehistoric finds in the area of the Dolomites.

Going through Forcella Staulanza you will go down towards **Zoldo Alto**, then **Forno di Zoldo** where you can visit the old Pieve church and the **Altare delle anime** by Andrea Brustolon "the Michelangelo of wood". Continuing south you will get to the centre of **Longarone**, right in front of the Vajont dam with its Memorial Sites. Go up to the **Dolomites Museum** on Mount Rite created by Reinhold Messner, at over 2000 metres high. Descending towards Cadore you will find **Cibiana**, the village of the Wall paintings.

Finally, going back up towards the Boite Valley, you will find the villages of **Vodo di Cadore** (Church of Vinigo, national monument), **Borca di Cadore** (church of Saints Simone and Taddeo with Callido organ and Our Lady of Cadore Church in ENI Village) and **San Vito di Cadore**. Definitely worth a visit is the fourteenth century Beata Vergine della Difesa church in San Vito. A couple of kilometres away, in only a few minutes, the Queen will grant you an audience with her, and once again you will be back to Cortina.



Longarone, Church of the Immaculate Conception, detail
© Dario Vallata

Crossing the Agordino and the Biois Valley

ITINERARY 3

To and from Cortina, through the Val di Zoldo and the Val Boite

ITINERARY 4

